



START & TURN ANALYSIS



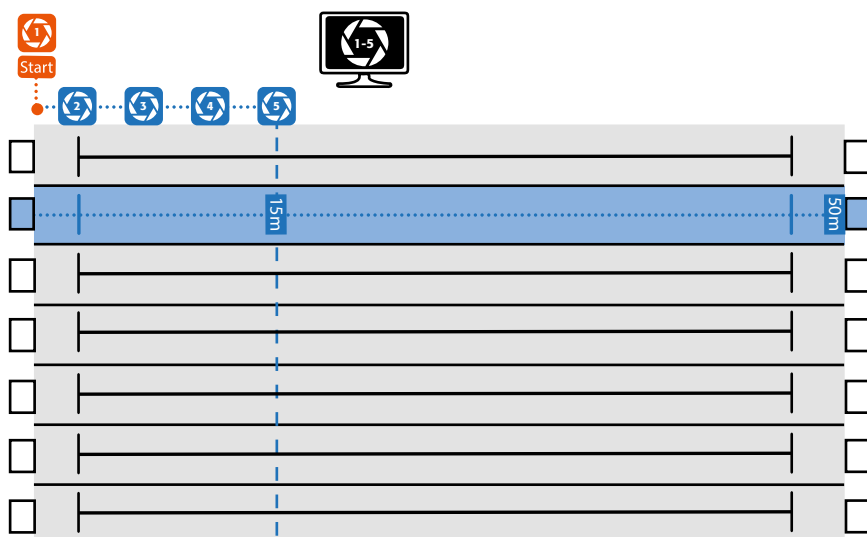
PERFORM. ANALYSE. IMPROVE. | Analyse the starts and turns of your swimming athletes up to 15m professionally. Get relevant parameters of Dive-/ and Backstroke Starts and key turn sections for a precise evaluation. All results are available within seconds after recording due to time-saving predefined analysis workflows.



+ BASIC CAMERA SET UP | 5-CAMERA-SYSTEM |

- Above water camera lateral to the starting block
- Underwater cameras at 2.5m | 5m | 10m | 15m alongside the swimming direction
- Expandable camera positions above and under water from arbitrary perspectives

START & TURN ANALYSIS | BASIC 5-CAMERA-SYSTEM |



LEGEND



1 x HIGH SPEED CAMERA ABOVE WATER

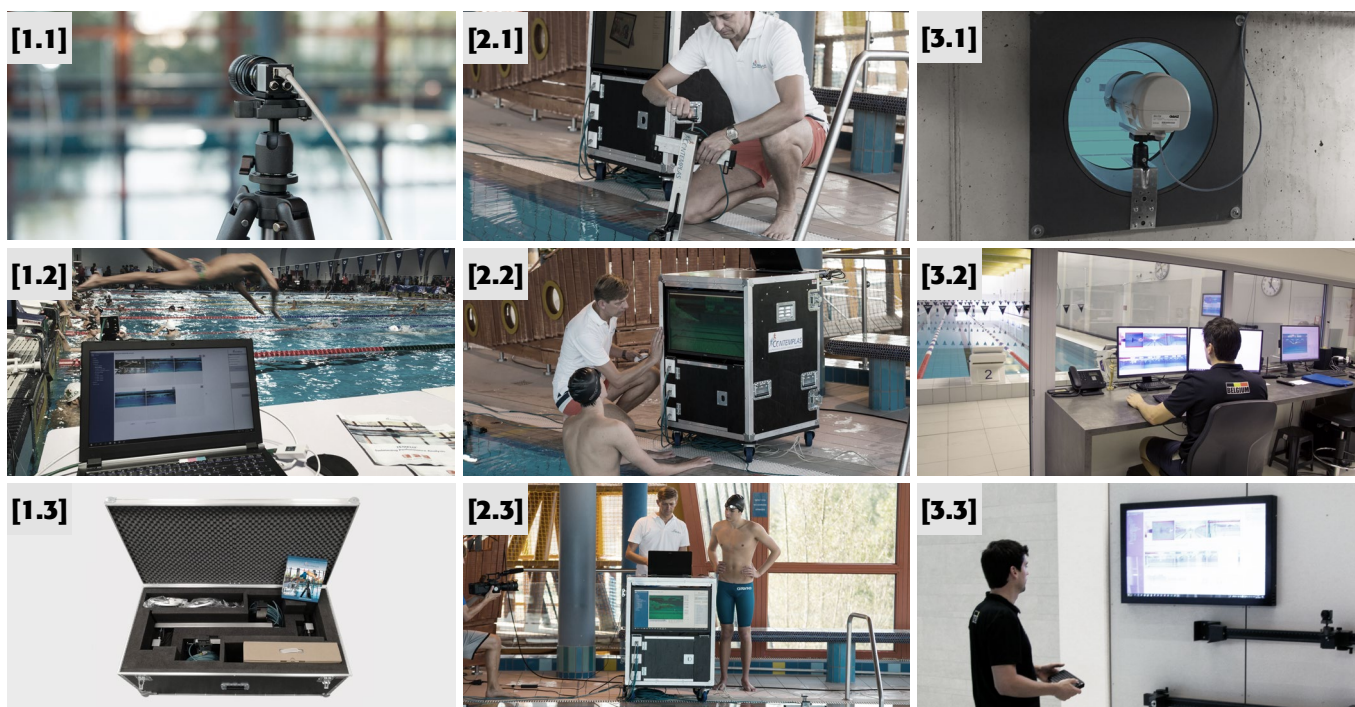


4 x HIGH SPEED CAMERAS UNDER WATER



ANALYSIS STATION

START & TURN ANALYSIS | YOUR PACKAGES |



PACKAGE COMPONENTS	START & TURN PORTABLE [1]		START & TURN MOBILE [2]		START & TURN FIX [3]
SOFTWARE TEMPLO® SWIMMING PERFORMANCE ANALYSIS	X		X		X
CAMERAS HIGHSPEED 5 CAMERAS TOTAL					
1x ABOVE WATER	ON A TRIPOD	[1.1]	ON A TRIPOD	[1.1]	WALL MOUNTED
4x UNDER WATER	POOL EDGE MOUNTED	[2.1]	POOL EDGE MOUNTED	[2.1]	BEHIND PORTHOLES [3.1]
COMPUTER	NOTEBOOK	[1.2]	PC IN ANALYSIS DESK	[2.2]	PC IN ANALYSIS ROOM [3.2]
POOL MONITOR			FEEDBACK MONITOR IN ANALYSIS DESK	[2.3]	MONITOR ON POOL SIDE WITH WIRELESS KEYBOARD [3.3]
CASE	2x FLIGHT CASE	[1.3]	ANALYSIS DESK	[2.3]	

ADD ONS



CAMERA



INSTUMENTED STARTING BLOCK



FEEDBACK MONITOR



CALIBRATION SYSTEM